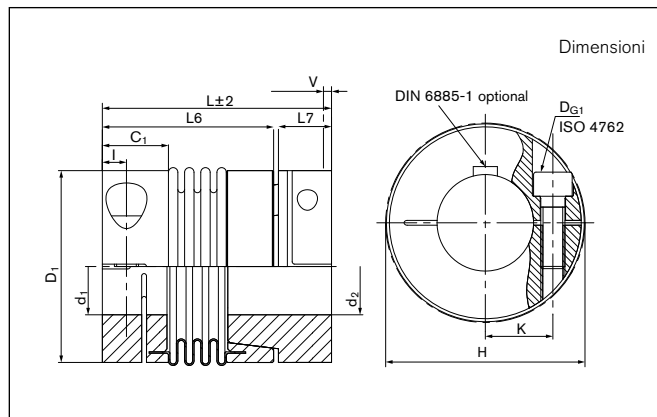


Giunti a soffietto metallico senza gioco **PKA**



Dimensioni

d₁;d_{2min} = Min. diametro del foro d₁/d₂

d₁;d_{2max} = Max. diametro del foro d₁/d₂

d_{1k};d_{2kmin} = Diametro foro min. d₁/d₂ con guida scanalata secondo DIN 6885-1

d_{1k};d_{2kmax} = Diametro foro max. d₁/d₂ con guida scanalata secondo DIN 6885-1

C₁ = Lunghezza guidata in foratura del mozzo

D₁ = Diametro esterno

H = Diametro di gioco

I = Interasse vite di serraggio e esterno mozzo

K = Interasse centro foro - vite di serraggio

L = Lunghezza totale

L₆ = Lunghezza corpo di base

L₇ = Lunghezza del corpo fino a inizio soffietto o connettore a spina

V = Distanza di precarico

Grandezza	d ₁ min-max	d ₂ min-max	d _{1k} min-max	d _{2k} min-max	C ₁	D ₁	H	I	L	K	L ₆	L ₇	V
	Senza sede chiavetta	Senza sede chiavetta	Con sede chiavetta	Con sede chiavetta									
	mm				mm			mm		mm		mm	
0,4	3 - 8	3 - 6	---	---	7	16	17	2,4	26/28/32	5	20/22/26	5,5	0,4
0,9	3 - 8	3 - 6	---	---	7	16	17	2,4	27/30/34	5	20/22/26	5,5	0,4
1,5	3 - 10	3 - 10	6 - 10	---	8,5	20	21,5	3	32/36	7	23/27	8	0,5
2	3 - 14	3 - 12	6 - 14	6 - 10	11	25	27	3,5	37/43/47	9	28/34/38	8	0,5
4,5	5 - 17	5 - 16	6 - 17	6 - 12	13	33	34,5	4,5	49/57	11,5	36/44	11,5	0,7
10	5 - 24	5 - 20	6 - 24	6 - 16	14	40	41,5	4,8	55/66	15,5	42/53	11	1,0
18	10 - 26	8 - 21	10 - 26	8 - 17	16,5	45	47	5,5	59/67	17,5	39/47	17,5	0,5 - 1,0
30	10 - 30	10 - 25	10 - 30	10 - 22	21	55	56,5	7,5	70/78	20	48/56	19	0,5 - 1,0
60	14 - 34	12 - 32	14 - 34	12 - 30	23,5	64	66,5	9	85/96	22,5	62,5/73,5	20	0,5 - 1,5
150	17 - 42	15 - 40	17 - 42	15 - 38	27,5	80	83	10	95/107	28	71/83	22	0,5 - 1,5
300	24 - 60	24 - 56	24 - 60	24 - 44	33	110	110	12,5	112/123	39	72/84	37,5	0,5 - 1,5
500	35 - 64	35 - 64	35 - 64	35 - 50	41	119	119	15	134/145	43	91/102	40,5	0,5 - 2,0

Trasmissione della coppia di serraggio trasmissibile T degli accoppiamenti non può più essere garantita per fori < d_{min}. Possono però essere fornite tipi di fori < d_{min}.

Momento di inerzia e peso (massa) sono calcolati in base al diametro del foro più grande.

[Continua alla pagina successiva](#)

Giunti a soffietto metallico senza gioco **PKA**

Dati tecnici

- T** = Coppia trasmissibile al valore T_A indicato
- n_{max}** = Max. numero di giri
- C_{Tdyn}** = Rigidità torsionale dinamica
- C_r** = Rigidità radiale
- C_a** = Rigidità assiale
- ΔK_a** = Massimo disallineamento assiale consentito
- ΔK_w** = Massimo disallineamento angolare consentito
- ΔK_r** = Massimo disallineamento radiale consentito
- J** = Momento di inerzia totale
- Gw** = Peso
- D_{G1}** = Filetto
- T_{A1}** = Coppia di serraggio vite di bloccaggio D_{G1}

Grandezza	T	n_{max}	C_{Tdyn}	C_r	C_a	ΔK_a	ΔK_w	ΔK_r	J	Gw	D _{G1}	T _{A1}
	Nm	1/min	10 ³ Nm/rad	N/mm		mm	Gradi	mm	10 ⁻³ kgm ²	kg	mm	Nm
0,4	0,5	15000	0,25/0,19/0,15	128/54/26	18/13/11	0,2/0,3/0,4	1,2/2/2	0,1/0,15/0,2	0,0003	0,008/0,009/0,01	1 x M2	0,3
0,9	1,1	15000	0,5/0,38/0,3	187/82/42	36/27/22	0,2/0,3/0,4	1,2/2/2	0,1/0,15/0,2	0,0004	0,009/0,01/0,011	1 x M2	0,6
1,5	1,75	15000	0,75/0,7	139/81	23/12	0,25/0,4	1,2/2	0,1/0,15	0,0011/0,0011	0,015/0,017	1 x M2,5	0,8
2	2,4	15000	1,5/1,3/1	147/96/46	18/14/9	0,3/0,4/0,5	1,2/2/2	0,1/0,2/0,25	0,0028/0,003/0,0031	0,028/0,03/0,032	1 x M3	1,5
4,5	5,5	15000	6,5/4	444/108	47/29	0,3/0,5	1,2/2	0,1/0,2	0,0112/0,0117	0,067/0,071	1 x M4	3
10	12	15000	8,1/6,7	361/193	46/34	0,4/0,5	1,2/2	0,15/0,25	0,0255/0,0274	0,097/0,107	1 x M4	3
18	22	12700	8/6	200/85	50/40	0,4/0,5	1,2/1,5	0,15/0,2	0,0482/0,0582	0,156/0,166	1 x M5	6
30	36	10200	35/25	720/220	50/30	0,4/0,5	1/1,5	0,1/0,2	0,1334/0,1439	0,282/0,3	1 x M6	12
60	75	8600	75/50	1100/330	90/55	0,4/0,5	1/1,5	0,1/0,2	0,3228	0,482/0,51	1 x M8	30
150	180	6800	150/100	2000/600	150/85	0,4/0,5	1/1,5	0,2	0,8289/0,8589	0,803/0,853	1 x M10	85
300	360	5900	500/280	6300/1500	280/150	0,4/0,5	1/1,5	0,2	3,299/3,454	1,71/1,77	1 x M12	120
500	600	4900	680/310	8800/1000	100/85	0,5/1	1/1,5	0,2	5,585/5,855	2,39/2,49	1 x M14	190

Coppia di serraggio trasmissibile T [Nm]

Grandezza	Ø3	Ø4	Ø5	Ø6	Ø7	Ø8	Ø9	Ø10	Ø11	Ø12	Ø13	Ø14	Ø15	Ø16	Ø17	Ø18	Ø19	Ø20	Ø21	Ø22	Ø24	Ø25	Ø28	Ø30	Ø35	Ø40	Ø45	Ø50	Ø55	Ø60	Ø64		
0,4	0,5	0,5	0,5	0,5	0,5	0,5	---	---	---	---	---	---	---	---	---	---	---	---	---	---	---	---	---	---	---	---	---	---	---	---	---		
0,9	0,5	0,5	0,5	0,5	0,5	0,5	---	---	---	---	---	---	---	---	---	---	---	---	---	---	---	---	---	---	---	---	---	---	---	---	---		
1,5	1,5	1,75	1,75	1,75	1,75	1,75	1,75	1,75	---	---	---	---	---	---	---	---	---	---	---	---	---	---	---	---	---	---	---	---	---	---	---		
2	1,7	2,3	2,4	2,4	2,4	2,4	2,4	2,4	2,4	2,4	2,4	---	---	---	---	---	---	---	---	---	---	---	---	---	---	---	---	---	---	---	---		
4,5	---	---	5,5	5,5	5,5	5,5	5,5	5,5	5,5	5,5	5,5	5,5	5,5	5,5	---	---	---	---	---	---	---	---	---	---	---	---	---	---	---	---			
10	---	---	7	8	9	10,5	12	12	12	12	12	12	12	12	12	12	12	12	12	12	12	---	---	---	---	---	---	---	---	---	---		
18	---	---	---	---	---	18	20	22	22	22	22	22	22	22	22	22	22	22	22	22	22	22	---	---	---	---	---	---	---	---	---		
30	---	---	---	---	---	---	---	36	36	36	36	36	36	36	36	36	36	36	36	36	36	36	36	36	36	---	---	---	---	---	---		
60	---	---	---	---	---	---	---	---	---	75	75	75	75	75	75	75	75	75	75	75	75	75	75	75	75	75	---	---	---	---	---		
150	---	---	---	---	---	---	---	---	---	---	---	---	---	180	180	180	180	180	180	180	180	180	180	180	180	180	180	---	---	---	---		
300	---	---	---	---	---	---	---	---	---	---	---	---	---	---	---	---	---	---	---	---	---	---	---	---	---	360	360	360	360	360	360	---	---
500	---	---	---	---	---	---	---	---	---	---	---	---	---	---	---	---	---	---	---	---	---	---	---	---	---	600	600	600	600	600	600	600	---

Esempio di ordinazione: PKA

Serie/Grandezza	Lunghezza	Diametro del foro d ₁	Diametro del foro d ₂	Posizione	Ulteriori dettagli
PKA 2	43	12	12	D	*

C = Posizione unica

D = Multiposizione

* Sede chiavetta