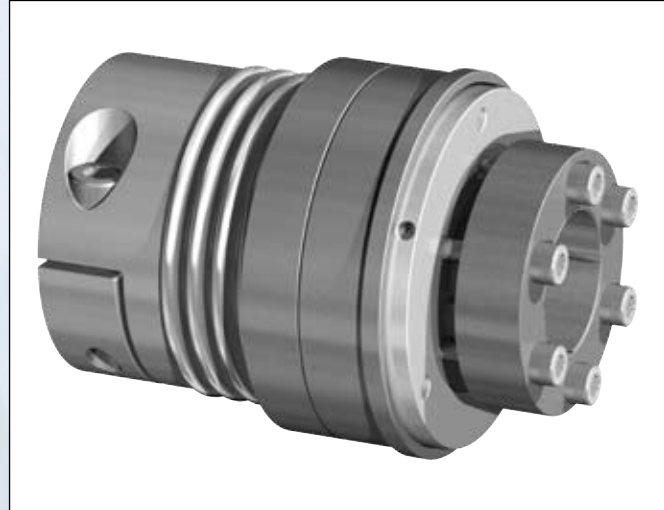


Typ DMK/B-CO mit Klemmnabe – Außenkonus

Synchronkupplung / Durchrastkupplung - spielfrei - mit Rollen

Abmessungen/Dimensions

- øA = Außendurchmesser / Outer diameter
- øA1 = Grundabmessung / Basic dimension
- øB = Grundabmessung / Basic dimension
- øB1 = Metallbalgdurchmesser / Metal bellows diameter
- øC = Grundabmessung / Basic dimension
- øD1^{H7} = Bohrungsdurchmesser / Bore diameter
- øD2^{H7} = Bohrungsdurchmesser / Bore diameter
- H1 = Schraube / Screw
- H2 = Schrauben / Screws
- J = Grundabmessung / Basic dimension
- L = 1) Gesamtlänge / Total length
- L1 = Grundabmessung / Basic dimension
- L2 = Grundabmessung / Basic dimension
- M1 = Maximale Einschublänge der Welle / Max. shaft rack length
- M2 = Spannlänge der Welle / Shaft clamping length
- S = Ausrückweg bei Überlast / Release path at overload
- T = Grundabmessung / Basic dimension



Abmessungen/Dimensions

| Größe Size | øA | øA1 | øB | øB1 | øC | øD1 ^{H7} min- max | øD2 ^{H7} min- max | H1 | H2 | J | L ±2 4/6 ¹⁾ | L1 | L2 | M1 | M2 | S | T |
|---------------|-----|-----|-----|-----|-----|----------------------------------|----------------------------------|----------------------------|----------------------------|----|------------------------------|------|----|------|----|-----|----|
| | | | | | | | | 1xDIN EN ISO 4762 | 6xDIN EN ISO 4762 | | | | | | | | |
| mm | | | | | | | | | | | | | | | | | |
| 30 | 65 | 45 | 62 | 56 | 55 | 10-25 | 10-20 | M6 | M4 | 22 | 92 / 100 | 28 | 51 | 24,5 | 30 | 1,2 | 8 |
| 60 | 75 | 55 | 70 | 66 | 64 | 14-35 | 15-25 | M8 | M5 | 23 | 103/ 113 | 30 | 53 | 29 | 38 | 1,2 | 10 |
| 150 | 95 | 65 | 92 | 82 | 80 | 20-40 | 20-35 | M10 | M6 | 30 | 130/ 142 | 35,5 | 72 | 33 | 45 | 2 | 12 |
| 200 | 105 | 79 | 102 | 90 | 90 | 25-42 | 20-40 | M12 | M6 | 26 | 136/ 149 | 31,5 | 72 | 37,5 | 40 | 2 | 13 |
| 300 | 115 | 79 | 110 | 110 | 110 | 32-45 | 30-45 | M12 | M8 | 30 | 137 / 148 | 38,5 | 70 | 37,5 | 50 | 2 | 13 |
| 500 | 129 | 90 | 125 | 122 | 119 | 40-60 | 35-50 | M14 | M8 | 36 | 154 / 165 | 44 | 84 | 41 | 53 | 2 | 15 |

Bestellbeispiel / Ordering Example:

DMK/B-CO

| Typ/Type | Größe/Size Länge/Length | ØD1 ^{H7} | ØD2 ^{H7} | Nm | Version | Schaltart/Functional principle |
|----------|----------------------------|-------------------|-------------------|-----|---------|-----------------------------------|
| DMK/B-CO | 200/136 | 35 | 30 | 120 | b | C |

Version/Torque range:

a oder/or b

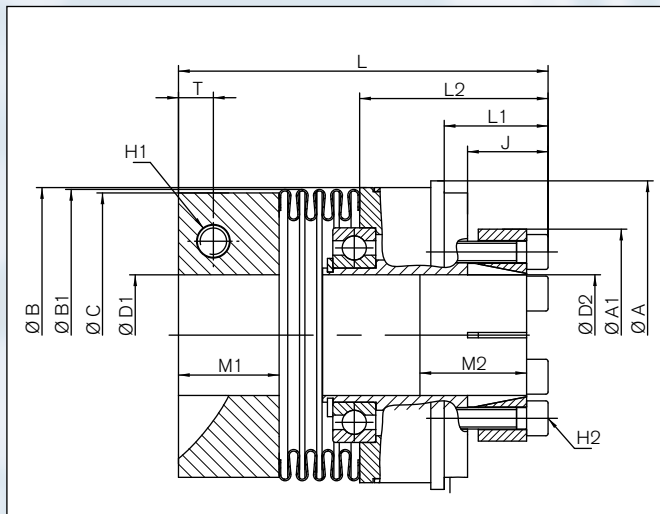
Schaltart/Functional principle: C = Synchronkupplung (360°) = Standard
Single-position re-engagement (360°)

D = Durchrastkupplung
Multi-position re-engagement

Nm = Gewünschtes Ausrückmoment
Torque requested

Type DMK/B-CO with clamping hub – outer cone hub

Single position re-engagement / multi position re-engagement - backlash-free - with roller technology



Schnittdarstellung / Sectional view

Technische Daten/Technical Data

- T_{KN}** = Ausrückmoment / Disengagement torque
- n_{max}** = Maximale Drehzahl / Max. rotational speed
- C_r** = Radiale Federsteife / Radial spring stiffness
- C_a** = Axiale Federsteife / Axial spring stiffness
- C_{tdyn}** = Drehfedersteife / Dynamic torsional stiffness
- M_A** = Anzugsmoment der Spannschrauben
Tightening torque of retaining screws
- J** = Trägheitsmoment / Moment of inertia
- ΔK_r** = Maximal zulässiger Versatz radial
Max. approved misalignment radial
- ΔK_a** = Maximal zulässiger Versatz axial
Max. approved misalignment axial
- ΔK_w** = Maximal zulässiger Versatz winklig
Max. approved misalignment angular

Technische Daten/Technical Data

| Größe Size | Einstellbereich / Torque adjustment range | | n _{max} min ⁻¹ | 4/6 ¹⁾ | | H1 | H2 | Metallbalgseite Metal bellows side | Nabenseite Hub side | Gewicht Weight | | | | | |
|---------------|---|-----------|---------------------------------------|-------------------|---------|---------|-----|--|------------------------|-------------------|---|----------------------|-----------------------------------|-----------------------------------|---------|
| | Version a | Version b | | N/mm | | | | | | | C _{tdyn} 10 ³ Nm/rad | M _A Nm | 10 ⁻³ Kgm ² | 10 ⁻³ Kgm ² | m kg |
| | | | | T _{KN} | Nm | | | | | | | | | | |
| 30 | 5-20 | 15-35 | 9240 | 718/222 | 48/27 | 36/26 | 15 | 5 | 0,16 | 0,16 | 0,7 | | | | |
| 60 | 12-35 | 20-70 | 8183 | 1125/333 | 91/53 | 73/49 | 35 | 8,5 | 0,4 | 0,4 | 1,4 | | | | |
| 150 | 25-75 | 65-150 | 6830 | 2030/601 | 147/86 | 151/101 | 70 | 14 | 1,5 | 1,5 | 2,4 | | | | |
| 200 | 50-120 | 80-200 | 5620 | 1531/450 | 147/85 | 173/116 | 90 | 14 | 1,65 | 1,65 | 3 | | | | |
| 300 | 30-140 | 100-300 | 5210 | 6328/1470 | 284/153 | 499/280 | 100 | 18 | 3,25 | 3,25 | 5,3 | | | | |
| 500 | 140-350 | 250-500 | 4585 | 8800/972 | 105/88 | 680/310 | 145 | 26 | 3,8 | 3,8 | 6,2 | | | | |

1) Die Länge des Balgs beeinflusst die Baulänge L. Es werden zwei Metallbalgausführungen (4 = kurzer Balg mit 4 Wellen; 6 = langer Balg mit 6 Wellen) mit unterschiedlichen Drehsteifen angeboten. Dadurch ändert sich das Längenmaß. / Length of the bellows influences installation length L. We offer two different versions of metal bellows (4 = short bellows with 4 ripples, 6 = long bellows with 6 ripples) with different torsional stiffnesses. Consequently length dimensions variable.